



ZANOTTI Spa

Via M.L. King, 30
46020 - Pegognaga (MN) - ITALY
Tel. +39 0376 5551
Fax +39 0376 536554
info@zanotti.com

Technical specifications

Version 60Hz 1.1

Model:

Class:

MSB125T17F

Uniblock SB



Technical data

Characteristics	M.U.	Value
Working temperature	°F	+45 ÷ +30
Starting mode		Direct
Voltage	Volt-Ph-Hz	230/1N~/60
Refrigerant		R404A
Defrost		Hot gas
Mass	lb	130

Compressor

Type		Hermetic
Nominal power	Hp	0,7

Condenser

Air flow	cfm	441
----------	-----	-----

Evaporator

Air flow	cfm	324
Air throw	ft**	13

Power data

Tc F	Ta F	P watt	P BTU/h	V 4" ft³	V 3" ft³
	70	1867	6376	600	546
	80	1750	5977	530	482
45	90	1638	5594	494	450
	100	1513	5167	424	386
	110	1365	4662	353	321
	70	1738	5936	530	482
	80	1616	5519	459	418
40	90	1504	5136	424	386
	100	1387	4737	388	353
	110	1261	4307	321	292
	70	1620	5533	494	450
	80	1502	5130	424	386
35	90	1390	4747	388	353
	100	1281	4375	328	298
	110	1178	4023	286	260
	70	1506	5143	424	386
	80	1389	4744	388	353
30	90	1281	4375	328	298
	100	1180	4030	286	260
	110	1094	3736	254	231

** Use air throw as a base. Air throw is affected by many factors such as height of room, product storage, location of evaporator, etc.
Tc: Coldroom temp. - Ta: External temp.
P: Refrigerant capacity - V: Recommended cold-room volume



XTCC

Xperts in Transportation Climate Control

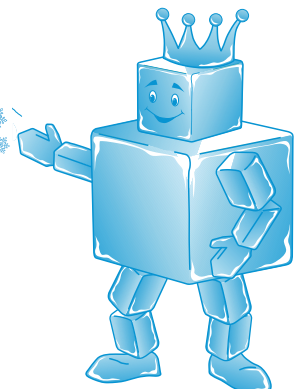
"Environmentally Friendly Solutions"

**REFRIGERATION/HEATING/INSULATION
SALES/SERVICE/INSTALLATION**

TEL : 905-362-2112 FAX : 905-362-2115

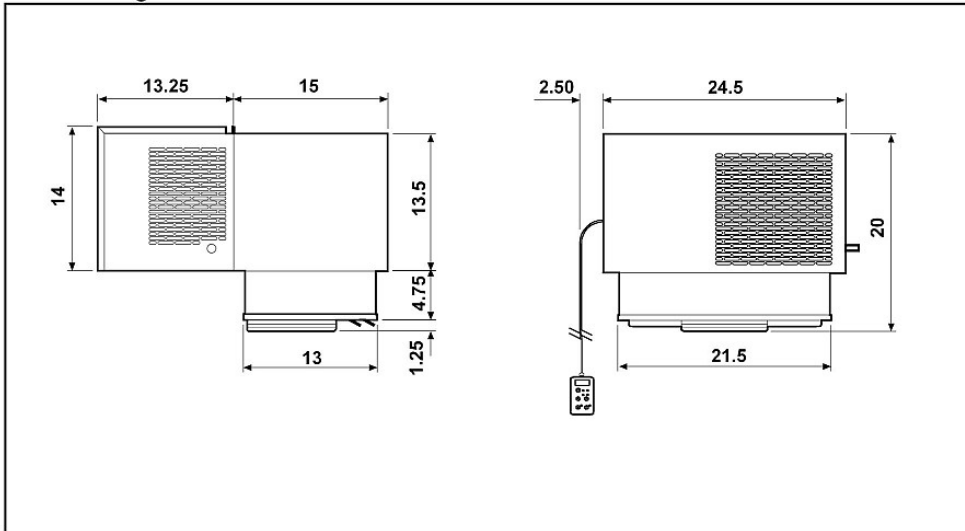
6198 Netherhart Road, Unit 2 Mississauga, ON. L5T 2G7

WWW.XTCC.CA

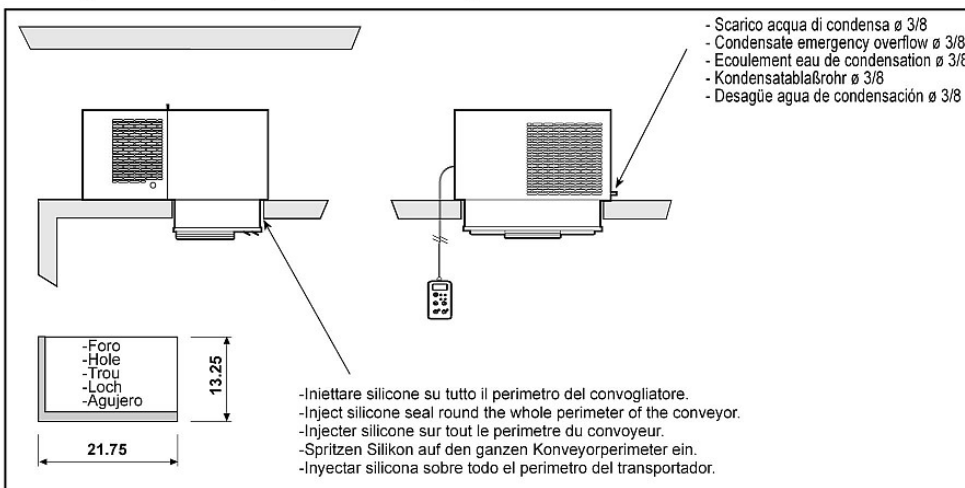


Dimensioni - Dimensions - Dimensions
Abmessungen - Dimensiones

SB125/ETL

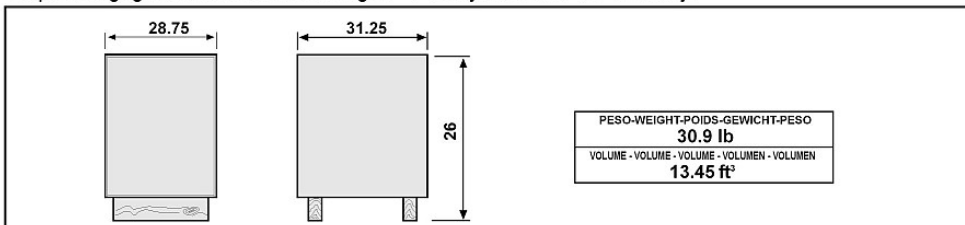


Schema di montaggio - Mounting scheme - Schema de montage
Montageschema - Esquema de montaje



- * Raccomandazioni in sede di installazione e per il controllo fornite sul manuale di installazione
- * To be advised at time of order for factory installation and operating instructions
- * Recommendations au moments d'installations et pour le contrôle fournis sur le manuel d'installation
- * Empfehlungen für die Installationsphase und zur Kontrolle, die im Handbuch zur Installation enthalten sind
- * Por cuanto respecta a recomendaciones de instalación y control ver manual de instalación

Peso e misure imballi - Packing weight and dimensions - Poids et dimensions emballages
Verpackungsgewicht und-abmessungen - Peso y medidas del embalaje



ZANOTTI S.p.A.